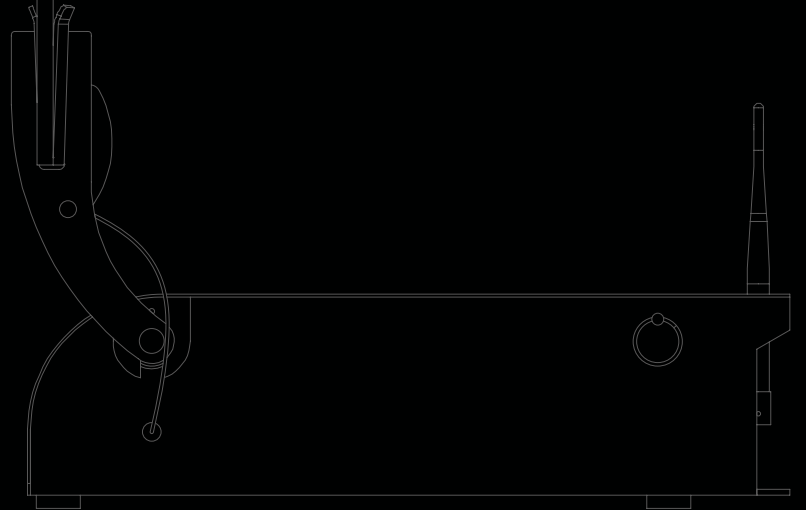


AutoTargets

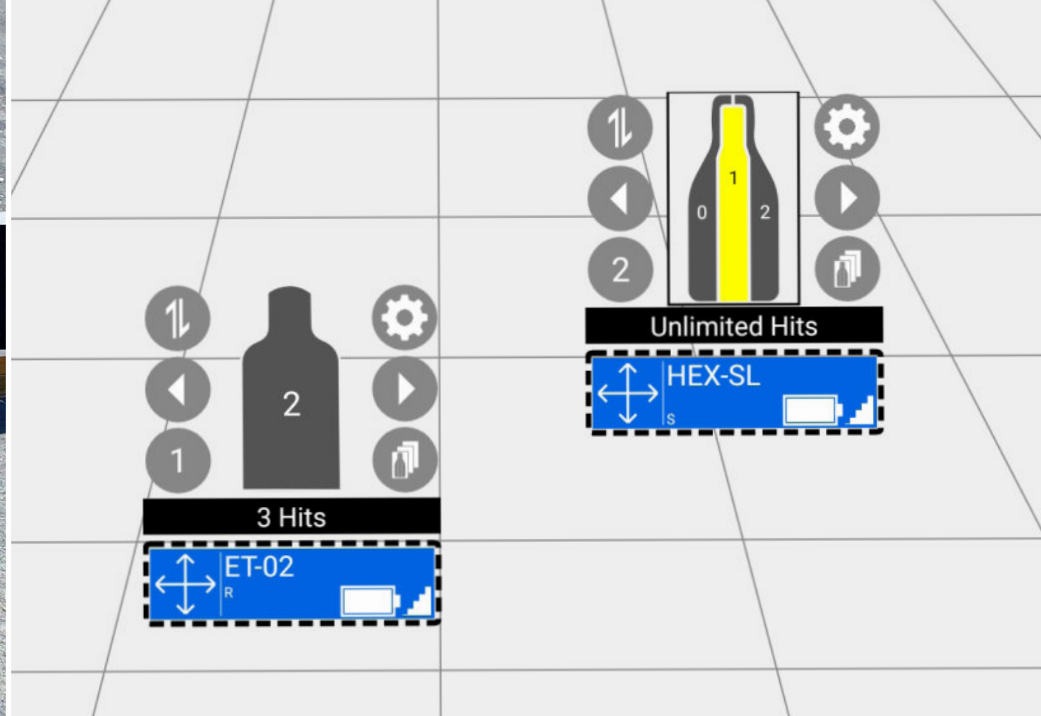
DATA-DRIVEN  
TRAINING





***ROBUST TARGET ACTUATORS.  
REAL-TIME ANALYTICS.  
INDUSTRY-LEADING CONTROL SOFTWARE.***





## HIT DETECTION TECHNOLOGIES

Accurate and reliable real-time hit reporting

Conductive and Kinetic detection options

Familiar FBI-Q and E-Type target designs

Support for lethal and non-lethal systems  
(Simunition™, Airsoft™)

All weather operation

## INDUSTRY-LEADING SOFTWARE

AutoTargets for Android™ offers fast and free targetry control, no infrastructure required

AutoTargets RangeControl™ is the most feature-rich targetry control system available

The LaneControl™ module affords self-service access to training



## ***ROBUST & VERSATILE HARDWARE***

---

Target actuators weigh less than 15 lbs

---

Devices create a mesh network with zero infrastructure or configuration required

---

Modular design allows for easy end user service

---

Powerful accessories: sensors, cameras, workstations, and more

---

## ***SERVICES & SUPPORT***

---

On-site and remote training

---

Site implementation and qualification

---

Network design & installation

---

Pneumatics design & installation

---

Curriculum design & adaptation

---

Custom hardware & software

---



*"THE ABILITY TO **REPEATABLY & RELIABLY** EXECUTE THESE COFS WITHOUT AN INSTRUCTOR AT EACH LANE WILL MAKE TRAINING **SUBSTANTIALLY MORE EFFICIENT.**"*

# *PRODUCTS*

---

TARGETS & HIT DETECTION 6

TARGET ACTUATORS 7

AUTOTARGETS FOR ANDROID™ 8

RANGECONTROL™ SOFTWARE SUITE 9

# TARGETS & HIT DETECTION

## Conductive Hit Detection

AutoTarget's proprietary HexLink™ Target provides multi-zone hit detection for projectiles from .22lr – .50 BMG at any distance and can last up to 1,000 rounds. The conductive matrix on each target recognizes hits from metallic projectiles, rising and falling based on programmed requirements.

### FEATURES

- Federal Q style target
- Scores 500 - 1000 rnds
- All weather
- Multi-zone detection
- All small arms calibers
- No standoff
- All metallic projectiles
- No spall or splatter

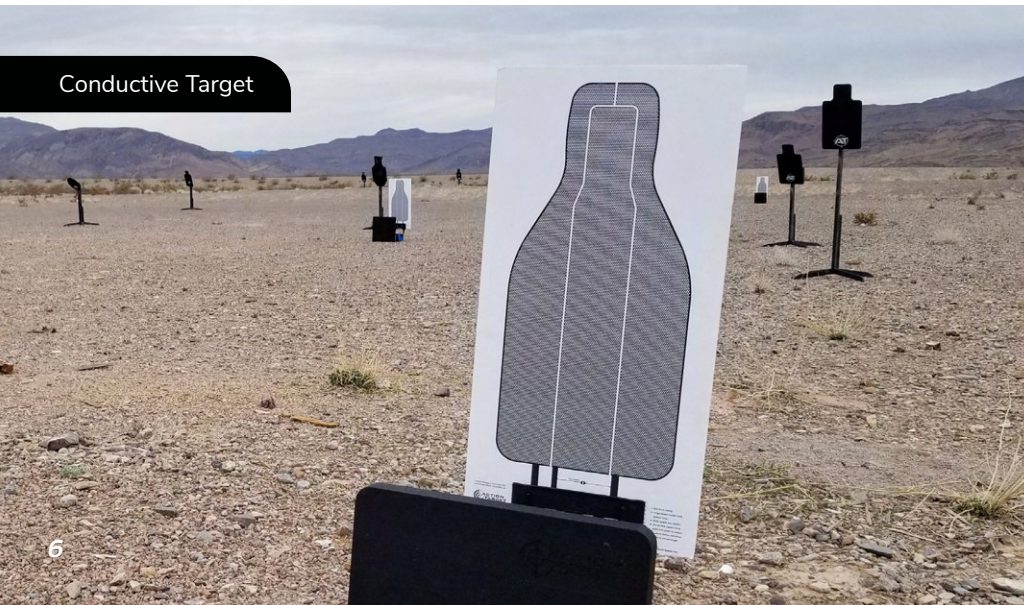
## Kinetic Hit Detection

E-Type targets are a military-style target that detects shots anywhere on the single-zone target. It also has advanced signal processing that eliminates false hits from any distance in any weather condition. Targets offer reliable hit detection for thousands of rounds.

### FEATURES

- For use with plastic E-Type silhouettes  
[NSN: 6920-00-071-4780]
- Advanced signal processing eliminates false hits
- Detects hits while lifting
- Reduced 1-yard standoff outdoors

Conductive Target



Kinetic Target





# TARGET ACTUATORS

AutoTargets Lift Units are available as standard lifting kits (pop-up style) or side lifting kits (swing-up style). Proprietary live-fire HexLink or Plastic E-Type silhouettes are required for use with AutoTargets Lift Units for hit sensing functionality. Each lift unit can be placed directly on the ground, behind a knee wall, or attached to surfaces with mounts. They can also be used with portable bullet traps with specialty mounts.

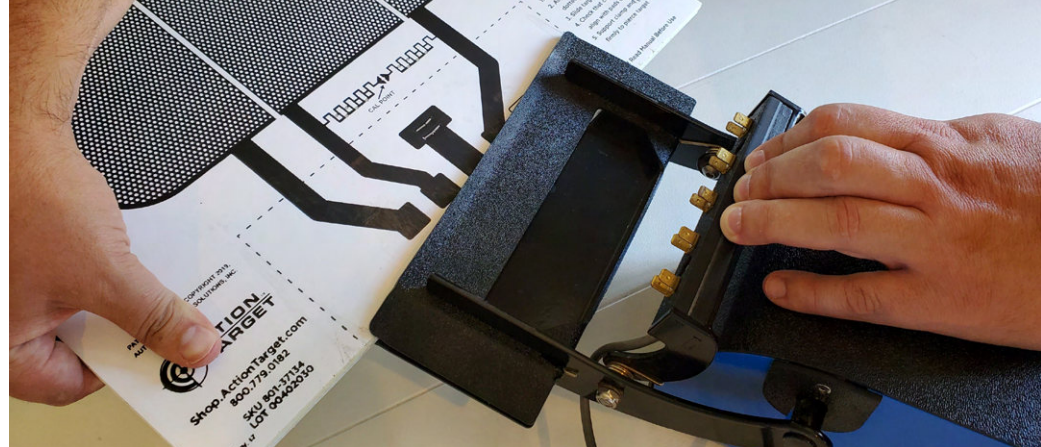
Lift units are designed to work with commercially available CO2 and HPA tanks or be connected to clean compressed air, both at 60 PSI (80 PSI for E-Types). The standard WiFi antenna provides connectivity up to 250 yds with line of sight from target to target. Optional equipment can extend the range up to 1,000 yds or provide coverage where line of sight is not available.

## FEATURES

- Modular design
- Field serviceable
- Light weight
- On-board mesh
- One-button startup
- Upgradeable

## CONFIGURATIONS

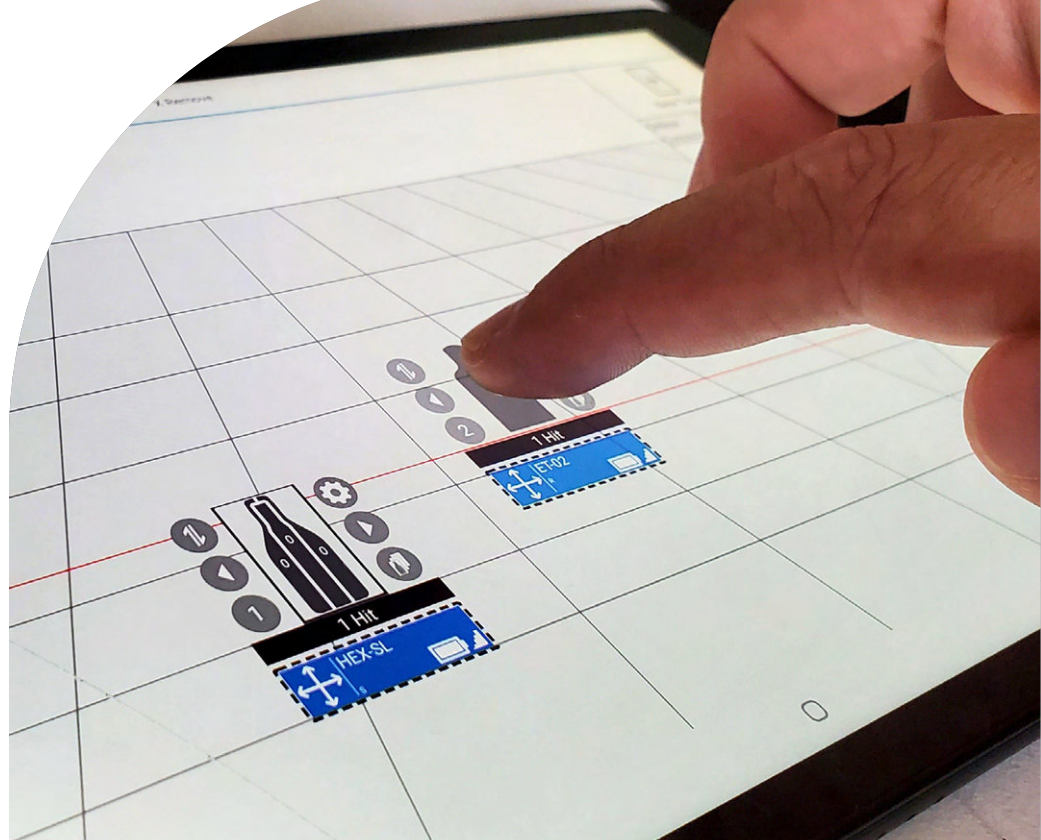
- Standard Pop-Up
- Bladed/Multi-Lift
- Bullet Trap Mount
- Knee-Wall Mount
- Kinetic Pop-Up



# AUTOTARGETS FOR ANDROID™

The AutoTargets App provides advanced wireless target controls for up to 20 AutoTargets lift units simultaneously. Targets can be placed anywhere in any environment with their positions represented on a mapped reference screen. Users can set each target's hit-to-fall parameters, including timeout, score requirement, shoot/no shoot, and presentation sequence. On the screen, hits are reported through sight and sound, providing immediate feedback to shooters.

The intuitive interface allows users to quickly and easily create complex courses of fire with unlimited steps, delays and target presentations. Each scenario can be saved and named to be used again without limits. As each course completes, a performance report is generated showing targets hit, time and location of hits, split times, overall course time and score. This report can be exported to a spreadsheet and stored on the device or emailed.



## FEATURES

- Portable target control
- WiFi™ connected
- Create and save courses of fire
- Simple interface
- Hit reporting, recording, and scoring
- Control up to 20 targets

# RANGECONTROL™ SOFTWARE SUITE

## RangeControl

AutoTargets Range Control Software is a multi-functional firearms training system designed to modernize weapons qualification, combat preparation, and decision-making tactics. This software controls target function on the range and records valuable training data for After Action Review. The scalable system can support training for a wide range of needs, from cadets to special operators.

### FEATURES

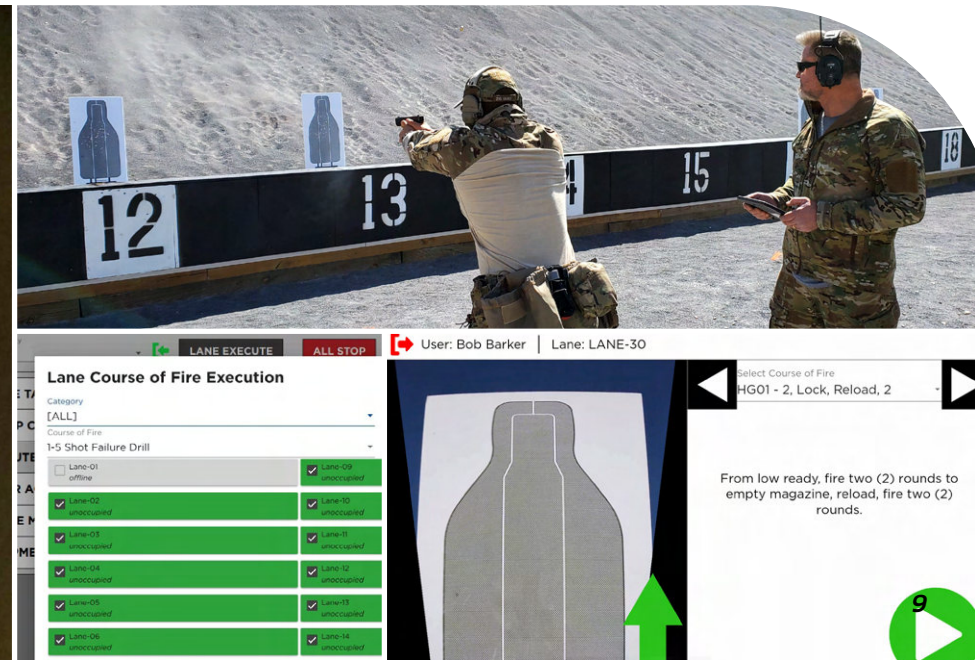
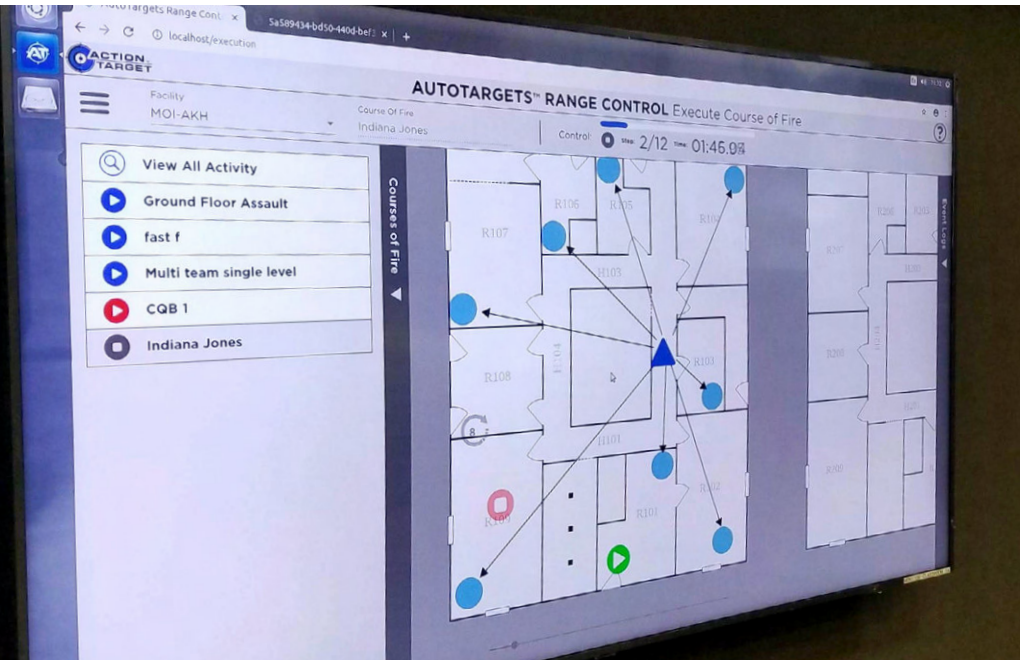
A powerful web interface	Range automation tools
Intuitive course builders	Portable or permanent deployments
Live analytics	Scalable infrastructure
After action review	Data export and integration

## Lane Control Interface

AutoTargets Lane Control Interface (LCI) is an add-on module to the AutoTargets Range Control Software. The LCI supports additional hardware down range, including high resolution cameras and lane-specific tablets for independent control of each training position. This software enhancement connects cameras, control software, and tablet controls through a WiFi network for an unparalleled user experience.

### FEATURES

Lane/shooter designated controls	Real time scoring
Improves qualification speed and pass rates	Scalable deployment
Live camera feed w/intuitive pinch-to-zoom	Configurable data retention policies
User Login & AAR	





***"CAPTURE OF TIME AND ACCURACY DATA AT MULTIPLE LEVELS - INDIVIDUAL STUDENT, GROUP, AND CLASS - ALLOW BOTH **REAL TIME FEEDBACK** AND POST-PROCESSING OF **MEANINGFUL PERFORMANCE DATA.**"***

# *APPLICATIONS*

---

LINE-OF-FIRE & QUALIFICATION **12**

SHOOT HOUSE AUTOMATION **13**

SITS / MPMG & MANEUVER **14**

ZERO-INFRASTRUCTURE PORTABLE **15**

# LINE-OF-FIRE & QUALIFICATION

Maximize efficiency on the range with reactive-scoring AutoTargets and manage lane and target function from a tablet on the range. Create and control timed training drills to improve weapon proficiency while saving time with automatic score-keeping. Optional Lane Control cameras provide an HD live view of targets down range and can allow independent control of each target lane.



## USAF Special Warfare Training - 2021

37 knee wall actuators

RangeControl Suite

LaneControl Interfaces with target live view

Integration w/ 3rd party systems

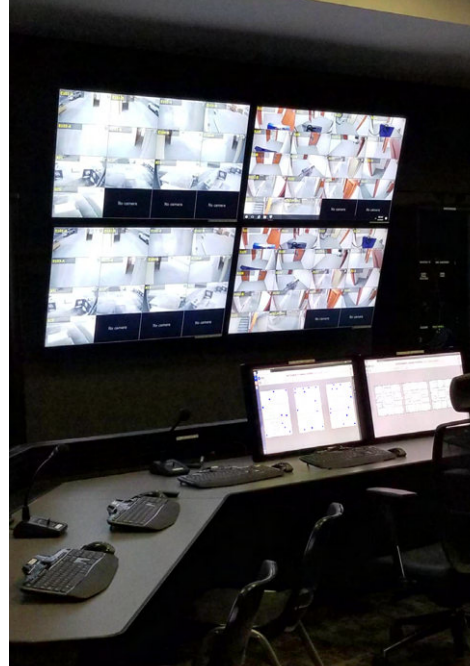
Large format workstations for AAR

Portable controls



# SHOOT HOUSE AUTOMATION

From small structures to large MOUT villages, AutoTargets enhances methods for tactical training. Unique mounting solutions make it possible to attach lift units to walls, furniture, or portable bullet traps. Build countless customizable scenarios to allow dynamic real world engagement training drills with adaptive course of fire and course triggers based on movement in the house which allows timed reaction data to be recorded for after action review.



## Middle-East Training Complex - 2018

- 2 shoot houses
- 79 target actuators
- Sensor-activated targets
- Camera-activated targets
- RangeControl Suite
- Custom control room

# SITS/MPMG & MANEUVER

Utilize AutoTargets with ranges that have barricades such as knee wall, bunker, or target line of fire. Designed for squad level tactics with multiple shooting lanes over short or long distances in natural terrain. Shooters can train solo, as a squad, or as multiple squads simultaneously using various weapons systems to meet dynamic training objectives.



## USAF Special Warfare Training - 2021

30 target actuators

300 yard engagement

12 firing positions across 10 acres

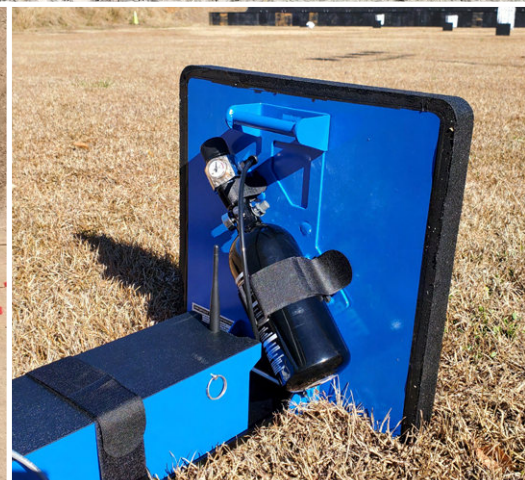
Wireless controls

After action suite



# ZERO-INFRASTRUCTURE PORTABLE

AutoTargets do not require an outside power or air supply, making it easy to position them anywhere on a range without an expensive infrastructure. The wireless mesh network makes it easy to set units anywhere downrange and control them from behind the firing line. An available ballistic shield holds each lift unit and CO2 or HPA tank behind a protective barrier, making it possible to simply set up in a field or range without the use of a dedicated barricade system. An optional rubber block accessory creates an ideal ballistic stand.



## Worldwide Portable Deployments Since 2016

- Thousands of devices in 24 countries across 5 continents
- Spans LE, military, and commercial applications
- 2 to 20 device packages
- On-board wireless mesh
- Flexibility to use AutoTargets for Android or ruggedized RangeControl laptops

# OUR CUSTOMERS

Federal

Military

International Military

Law Enforcement

Tactical Trainers

Commercial

Shooting Industry

Private Individuals

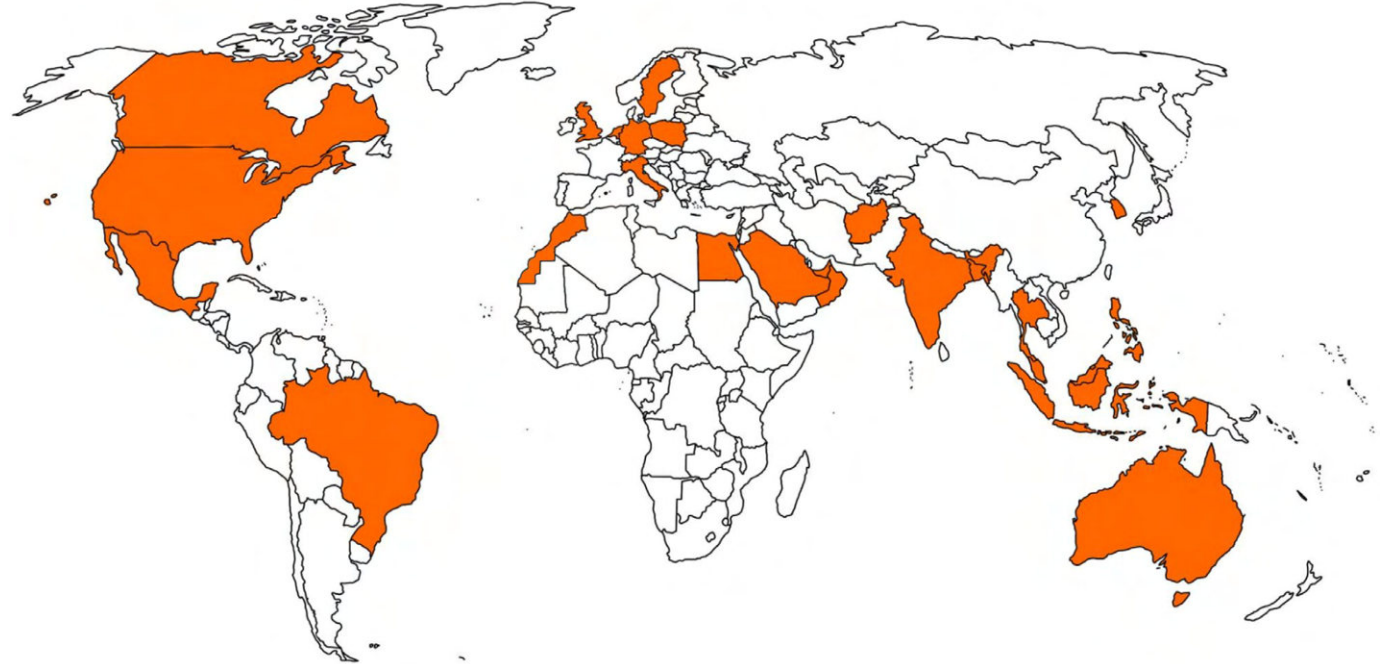


# MISSION

Provide superior firearms training systems to help prepare for moments of critical consequence.

Headquartered in Bucks County, Pennsylvania and founded by friends and family, the AutoTargets team has dedicated the last decade to innovation in targetry.

We continue to grow, deploying our products across the globe to customers that need mission critical training and individual improvement.



Founded: 2010

Products: 34

Targets Fielded: 3,000

Countries: 24

Please contact us for more information or custom solutions.

[AutoTargets.com](https://www.autotargets.com)

215.949.2422 | [sales@autotargets.com](mailto:sales@autotargets.com) | 1447 Mearns Road, Ivyland, PA 18974





[AutoTargets.com](https://autotargets.com) | 215.949.2422 | [sales@autotargets.com](mailto:sales@autotargets.com) | 1447 Mearns Road, Ivyland, PA 18974

